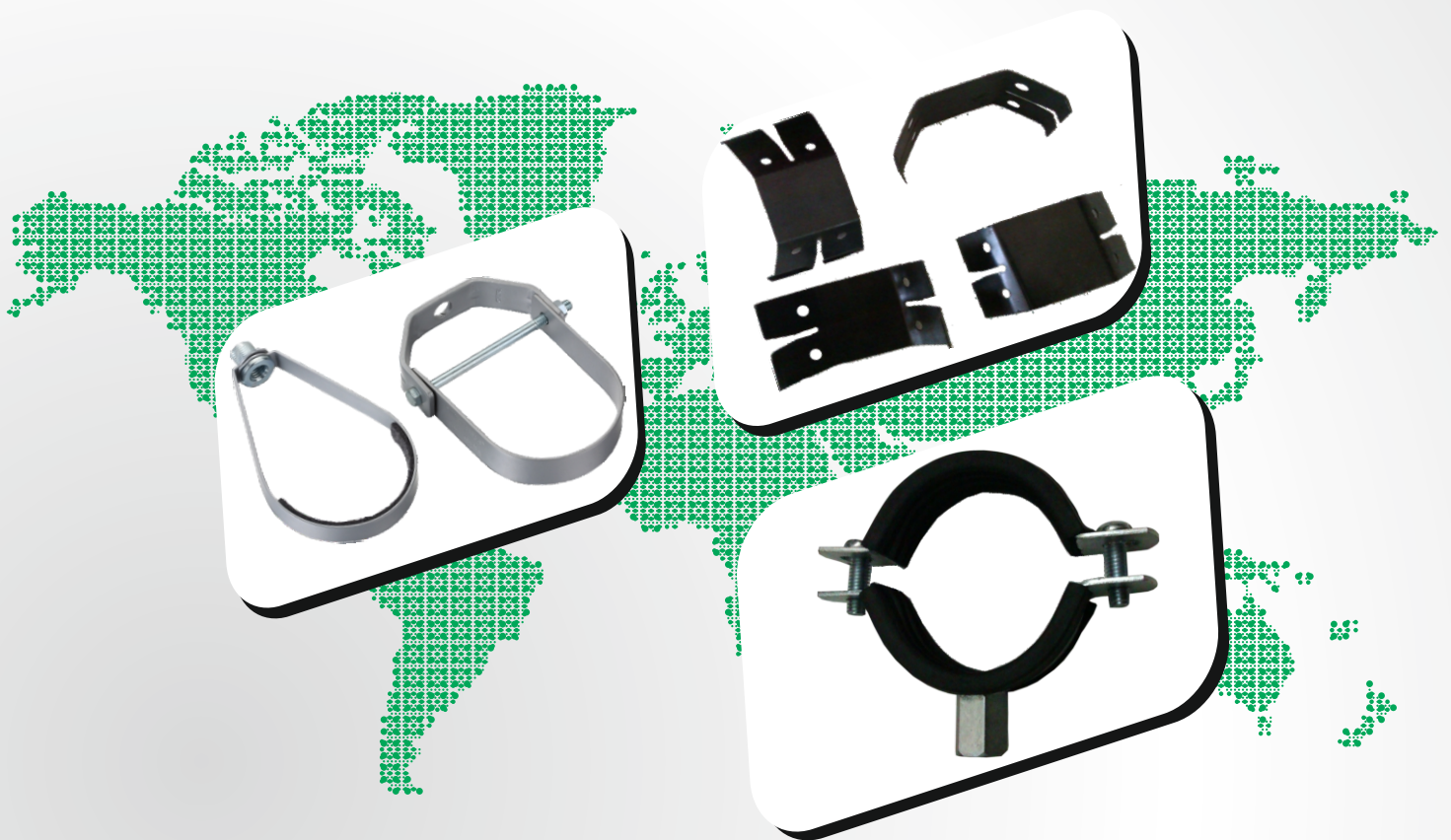




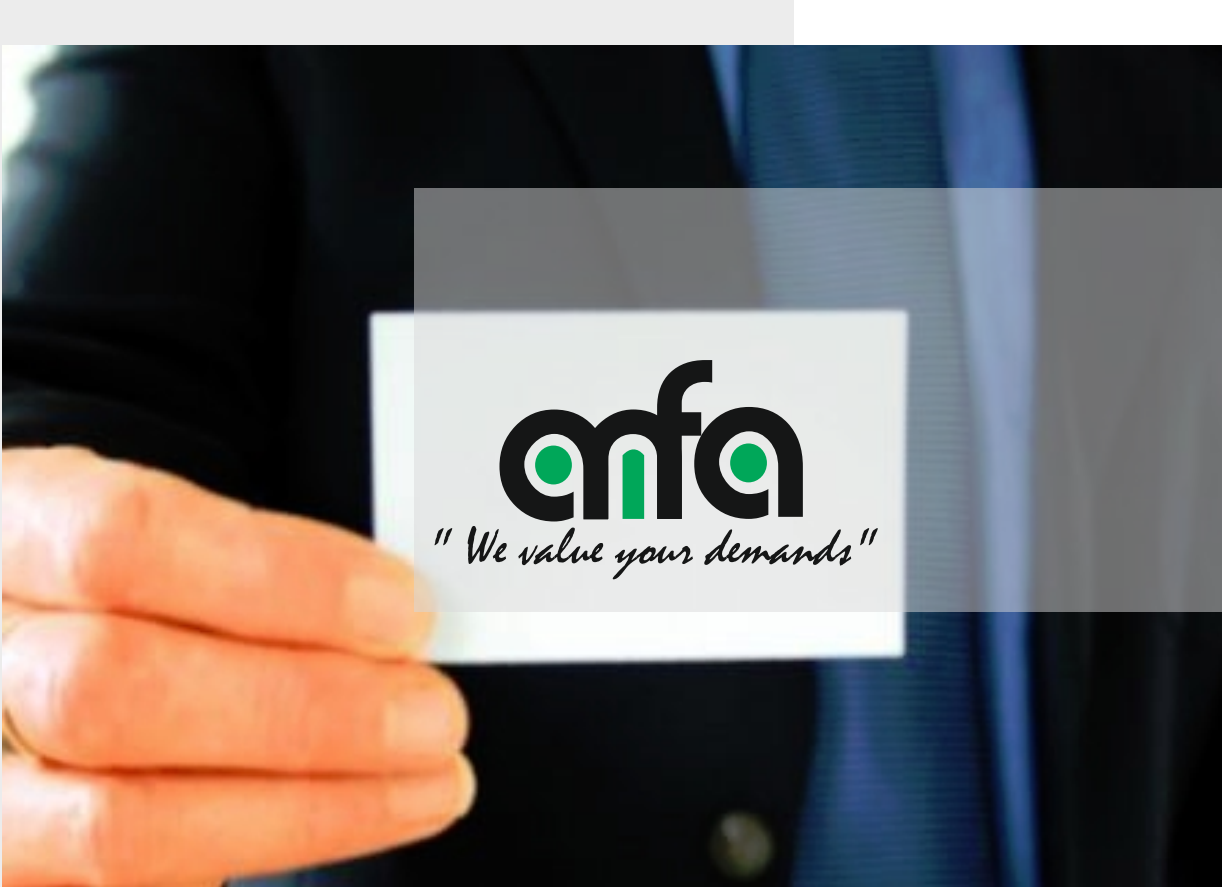
" We value your demands "



Pipe Support System & False Ceiling Accessories

Anfa Incorporation





About Anfa **Incorporation**

ANFA Incorporation is a manufacturer and exporter of engineering and Non Engineering products. ANFA was established in the year 2007 to promote its own manufacturing company STARTECH METAL ENGINEERING's, products & services Globally. Until then we were supplying the products to different regions internationally through Indian Exporters specifically to the Middle East Market & European Market. We possess 20 years of Engineering experience and expertise in Manufacturing Metal Pressing parts, Tools & Dies designing and manufacturing, Industrial fabrications, EOT Cranes and Crane components. Our units are well equipped with latest technology in press shop, Tool room with CNC Machines & fabrication unit. Our team of quality controller and technical expert play an indispensable role and leave no stone unturned to leave foot prints in the industry through our quality products. Quality throughout the organisation is mandatory. Our team of quality controllers maintain a rigorous monitoring right from the procurement of raw material to the dispatch of goods.

Our marketing professionals are well diversified having international business experience specifically of Middle East and African regions.

Our Mission is to earn a reputation of excellence globally by manufacturing & supplying products of superior value and of high quality, providing personalized customer service and on-time delivery.

A Glance at Our Services :

Segments and activities offered by ANFA Incorporation are, Sheet metal pressed Components, Wire formed components, Industrial Fabrication, Solutions in Pipe Punching for Transformer Radiator Head, Sheet Metal Tools & dies.

A Glance at Our Services in Marketing :

Currently product marketed by ANFA Incorporation are, Building Construction Material-Pipe Support System, -Suspended False Ceiling Accessories, -Shower Drain.

Industry Applications:

All types of Industrial Over Head Crane, Festoon System for E.O.T. Crane & Crane Components.

ANFA Incorporation has a Non engineering product supplies Ethanol, Fertilizers Seeds for Export Trading only.

Rubber Lined Nut Clamps

Construction Features

- Strengthened lock bolts for high load capacity.
- Can be used for both horizontal and vertical installations.
- Rubber lining for suppression of sound and vibrations.
- M6 side screws.
- Grooved construction for added strength.



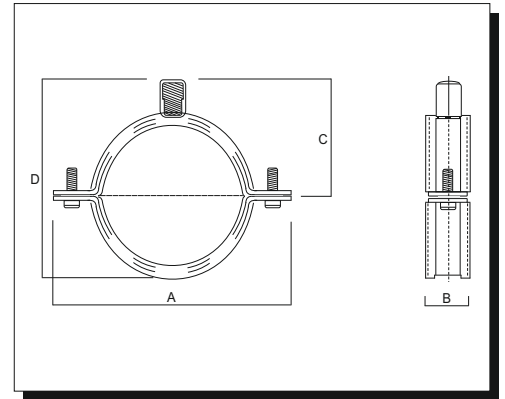
Technical Specifications

Material: Mild Steel

Coating: Zinc Plated

Welded Nut M8/M10

Safe and Break Loads as per Chart



Part No.	Size inches	Dia mm	Range mm	Dimensions (mm)				Thickn-ess mm	Safe load kgs	Break load kgs
				A	B	C	D			
AIRNC22	1/2"	22	20-25	65	20	29	43	1.6	150	450
AIRNC28	3/4"	28	26-30	70	20	32	50	1.6	150	450
AIRNC35	1"	35	32-36	85	20	36	56	1.6	150	450
AIRNC42	1 1/4"	42	38-43	92	20	39	63	1.6	150	450
AIRNC48	1 1/2"	48	47-51	98	20	42	72	1.6	150	450
AIRNC60	2"	60	60-64	110	20	48	81	1.6	150	450
AIRNC75	2 1/2"	75	74-80	125	20	56	96	1.6	200	600
AIRNC90	3"	90	87-92	146	20	63	111	1.6	200	600
AIRNC115	4"	115	113-118	171	20	76	136	1.6	200	600
AIRNC140	5"	140	138-142	196	20	88	161	1.6	200	600
AIRNC168	6"	168	168-172	224	25	102	189	2	200	600
AIRNC220	8"	220	215-220	276	25	128	241	2.5	300	900

Measurements are subject to 5% tolerance

*Due to the continuous product development, specifications may change without prior notice.

Plain Nut Clamps

Construction Features

- Strengthened lock bolts for high load capacity can be used for both horizontal and vertical installations.
- Lock bolts with combi cross recessed head.
- M6 side screws with PE captive disc.



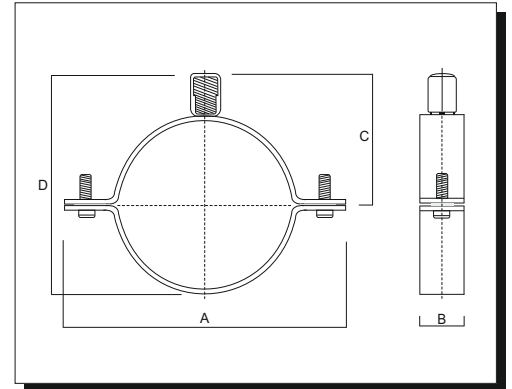
Technical Specifications

Material: Mild Steel

Coating: Zinc Plated

Welded Nut M8/M10 with option of M10/M12

Safe and Break Loads as per Chart



Part No.	Size inches	Dia mm	Range mm	Dimensions (mm)				Thickn-ess mm	Safe load kgs	Break load kgs
				A	B	C	D			
AIPNC22	1/2"	22	20-25	66	20	26	37	2	200	600
AIPNC28	3/4"	28	26-30	72	20	29	43	2	200	600
AIPNC35	1"	35	32-36	79	20	33	50	2	200	600
AIPNC42	1 1/4"	42	38-43	86	20	36	57	2	200	600
AIPNC48	1 1/2"	48	47-51	92	20	39	63	2	200	600
AIPNC60	2"	60	60-64	104	20	45	75	2	200	600
AIPNC75	2 1/2"	75	74-80	119	20	53	90	2	200	600
AIPNC90	3"	90	87-92	134	20	60	105	2	200	600
AIPNC115	4"	115	113-118	159	20	73	130	2	200	600
AIPNC140	5"	140	138-142	184	20	85	155	2.5	300	900
AIPNC168	6"	168	168-172	212	25	99	183	2.5	300	900
AIPNC220	8"	220	215-220	264	25	125	235	2.5	300	900

Measurements are subject to 5% tolerance

*Due to the continuous product development, specifications may change without prior notice.

Sprinkler Clamps

Construction Features

- One piece clip guarantees a high permissible load.
- Mounting without any tools.
- Locking device allows easy pre-mounting.
- Adjustable in height.



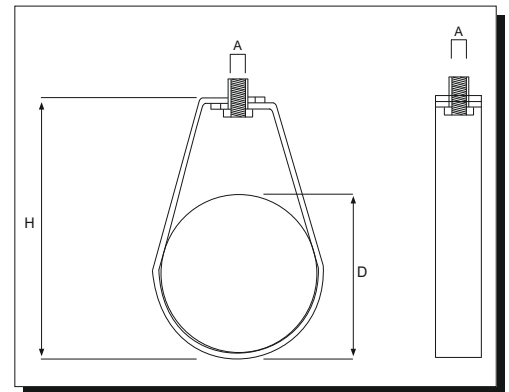
Technical Specifications

Material: Mild Steel

Coating: Zinc Plated

For use in fire fighting and Sprinkler applications.

Designed to meet international standards.



Part No.	Size inches	(D) Diameter mm	(A) Rod Size mm	Stripe Size mm	Total (H) Height mm	Safe Working Load kgs	Break Load kgs
AISC35	1"	35	10	1.5x20	68	750	2250
AISC42	1 1/4"	42	10	1.5x20	75	750	2250
AISC48	1 1/2"	48	10	1.5x20	81	750	2250
AISC60	2"	60	10	1.5x20	100	750	2250
AISC73	2 1/2"	73	10	2x20	120	1000	3000
AISC89	3"	89	10	2x20	135	1000	3000
AISC115	4"	115	10	2x20	165	1400	3000
AISC140	5"	140	12	2x20	195	1800	5400
AISC168	6"	168	12	2x25	230	2100	6300
AISC219	8"	219	12	2x25	290	2800	8400
AISC273	10"	273	12	2x25	315	3500	10500

Measurements are subject to 5% tolerance

*Due to the continuous product development, specifications may change without prior notice.

Standard Clevis Hanger

Construction Features

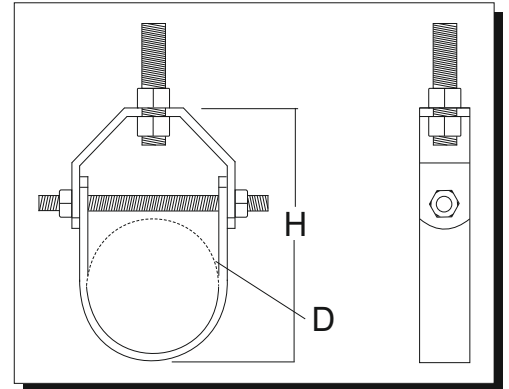
- Designed for chilled water pipe work and fire fighting systems.
- Design permits vertical adjustment of pipe after installation
- Hanger load nut above Clevis must be tightened securely to ensure proper hanger performance.



Technical Specifications

Material: Mild Steel

Designed to meet international standards.



Part No.	Pipe Size inches	Dimensions (mm)				H	D	Max Load Kgs
		Upper Steel	Lower Steel	Rod Hole Size	Bolt Size			
AICH35	1"	3x25	3x25	10	M1/4x2 1/2"	82	35	2710
AICH42	1-1/4"	3x25	3x25	10	M1/4x2 1/8"	92	42	2710
AICH48	1-1/2"	3x25	3x25	10	M1/4x3"	100	48	2710
AICH60	2"	3x25	3x25	10	M1/4x3"	117	60	2710
AICH73	2-1/2"	3x30	3x30	10	M1/4x3 1/2"	146	73	5020
AICH89	3"	3x30	3x30	10	M5/16x4 1/2"	155	89	5020
AICH115	4"	4x30	3x30	10	M5/16x4 1/2"	198	115	6360
AICH140	5"	4x32	3x32	12	M3/8x6"	232	140	6360
AICH168	6"	4x40	3x40	12	M1/2x9"	266	168	8630
AICH219	8"	4x40	4x40	12	M5/8x10 1/2"	338	219	8890
AICH273	10"	4x45	4x45	16	M5/8x12 1/2"	419	273	16010
AICH323	12"	4x45	4x45	20	M5/8x15"	490	323	16900

Measurements are subject to 5% tolerance

*Due to the continuous product development, specifications may change without prior notice.

U Clamps (Heavy & Light Saddle)

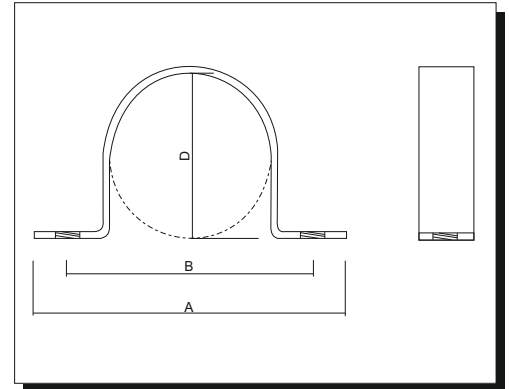
Construction Features

- Used to mount plain or insulated pipes.



Technical Specifications

Material: Mild Steel with Zinc Plated & G.I.
Designed to meet international standards.



Part No.	Size	D	A	B
		mm	mm	mm
AIUC22	1/2"	22	76	51
AIUC28	3/4"	28	82	57
AIUC35	1"	35	89	64
AIUC42	1 1/4"	42	96	71
AIUC48	1 1/2"	48	102	77
AIUC60	2"	60	114	89
AIUC75	2 1/2"	75	145	113
AIUC90	3"	90	160	128
AIUC115	4"	115	185	153

Measurements are subject to 5% tolerance.

**Due to the continuous product development, specifications may change without prior notice.*

Two Piece Channel Clip

Construction Features

- Used for parallel piping mounted on channels.
- Quick installation design.



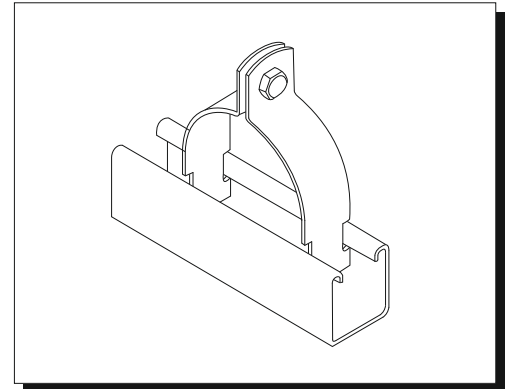
Technical Specifications

Material: Mild Steel

Designed to meet international standards.

Electrogalvanized as per ASTM B 633 Standards.

Hot dipped galvanised can be provided on request.



Part No.	Pipe Size	Stripe Size mm
AITC1108	8cu	32x1.6
AITC1110	10cu	32x1.6
AITC1115	15cu	32x1.6
AITC1117	17cu	32x1.6
AITC1120	20cu	32x1.6
AITC1121	15nb	32x1.6
AITC1125	25cu	32x1.6
AITC1127	20nb	32x1.6
AITC1129	29ns	32x2.0
AITC1132	32cu	32x2.0
AITC1134	25nb	32x2.0
AITC1138	40cu	32x2.0
AITC1143	32nb	32x2.0
AITC1148	40nb	32x2.0
AITC1151	50cu	32x2.5
AITC1154	54ns	32x2.5
AITC1157	57ns	32x2.5
AITC1160	50nb	32x2.5
AITC1164	65cu	32x2.5
AITC1167	67ns	32x2.5
AITC1170	70ns	32x2.5
AITC1173	65nb/sched40	32x2.5
AITC1176	65nb/80cu	32x2.5
AITC1179	79ns	32x2.5
AITC1183	83ns	32x2.5
AITC1186	86ns	32x2.5
AITC1189	80nb	32x2.5
AITC1192	92ns	32x2.5
AITC1195	95ns	32x2.5

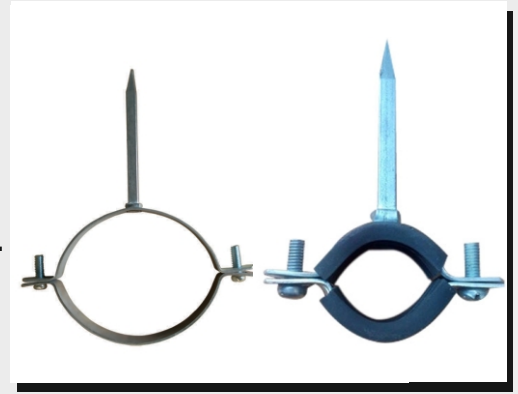
Part No.	Pipe Size	Stripe Size mm
AITC1198	98ns	32x2.5
AITC1102	102cu	32x2.5
AITC1105	105ns	32x2.5
AITC1108	108ns	32x2.5
AITC1110	110ns	32x2.5
AITC1115	100nb	32x2.5
AITC1117	117ns	32x2.5
AITC1121	121ns	32x2.5
AITC1127	125cu	32x2.5
AITC1133	133ns	32x2.5
AITC1140	125nb	32x2.5
AITC1146	146ns	32x2.5
AITC1152	152cu	32x2.5
AITC1159	159ns	32x2.5
AITC1165	150nb	32x2.5
AITC1168	50nb/sched40	32x2.5
AITC1171	171ns	32x2.5
AITC1178	178ns	32x2.5
AITC1190	190ns	32x2.5
AITC1103	200cu	32x2.5
AITC1120	200nb	32x2.5
AITC1228	228ns	32x2.5
AITC1240	240ns	32x2.5
AITC1252	252cu	32x2.5
AITC1268	268ns	32x2.5
AITC1275	250nb	32x2.5
AITC1302	300cu	32x2.5
AITC1324	300nb	32x2.5

**Due to the continuous product development, specifications may change without prior notice.*

Nail Clamp & Rubber Lined Nail Clamp

Construction Features

- Strengthened lock bolts for high load capacity.
- Can be used for both horizontal and vertical installations.
- Rubber lining for suppression of sound and vibrations.
- M6 side screws.
- Grooved construction for added strength.



Technical Specifications

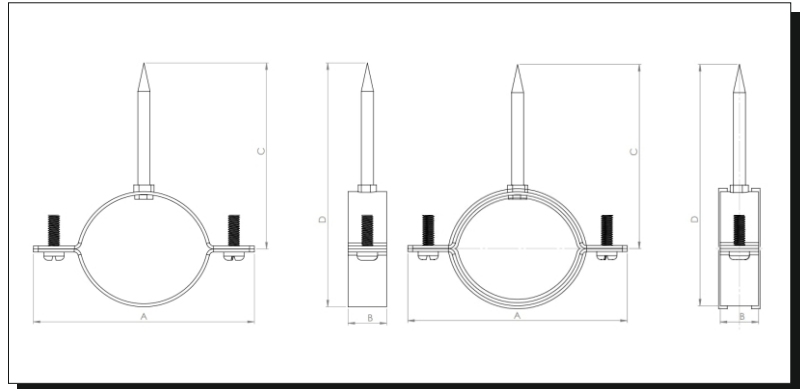
Material: Mild Steel

Coating: Zinc Plated

Nail: 6mm / 8mm

Size: 67mm to 82mm

Safe and Break Loads as per Chart



MS Nail Clamp with Galvanized Coating

Sr. No.	Item	Material	Size	Thickness (mm)	Width (mm)	Length / Nail Size
1	Nail Clamp	MS	1/2"	1.2/1.5	19	6x72 mm
2	Nail Clamp	MS	3/4"	1.2/1.5	19	6x72 mm
3	Nail Clamp	MS	1"	1.2/1.5	19	6x72 mm
4	Nail Clamp	MS	1.1/4"	1.2/1.5	19	6x72 mm
5	Nail Clamp	MS	1.1/2"	1.2/1.5	19	6x72 mm
6	Nail Clamp	MS	2"	1.2/1.5	19	6x72 mm
7	Nail Clamp	MS	2.1/2"	1.2/1.5	19	6x72 mm
8	Nail Clamp	MS	3"	1.2/1.5	19	6x72 mm
9	Nail Clamp	MS	4"	1.2/1.5	19	6x72 mm

Measurements are subject to 5% tolerance

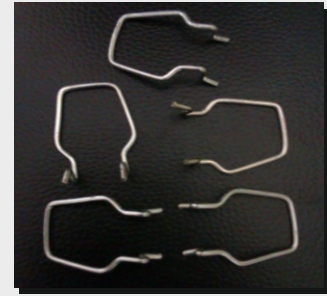
*Due to the continuous product development, specifications may change without prior notice.

Wire Connecting Clip / Furring Clip

We offer furring clip and preformed wire connecting.

Description: 2.5mm dia preformed wire clip to fit furring channel and "C" channel Material: 2.5mm dia Hot Dip Galvanized steel wire Packed: 500 per internal box

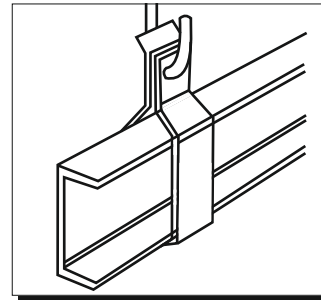
Application: Part of Gypsum board framing support system



Channel Bracket

We offer channel bracket.

Description: 38mm channel clamp to hold Channel to ceiling by Threaded rod Material: Galvanised Steel.

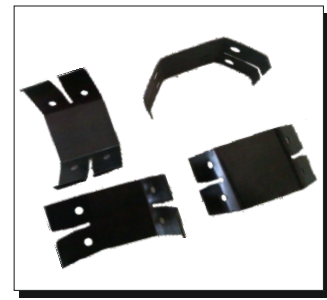
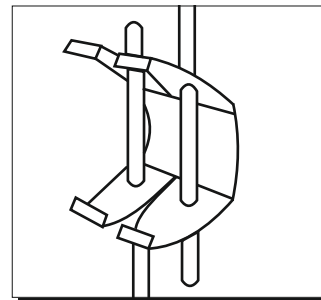


Double Spring Clip

We offer double spring clip and butterfly spring clip. These spring clips are adjustable. Description: double spring adjustable clip ceiling leveling

Material: Spring Steel

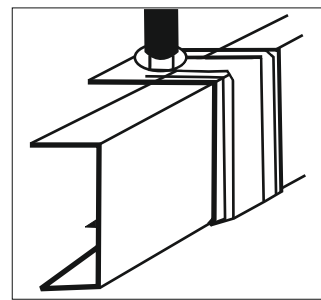
Finish: Black phosphated / Blackodised.



Channel Clamp

We offer channel clamp.

Description: 38mm channel clamp to hold Channel to ceiling by Threaded rod Material: Hot dip Galvanized steel.



**Due to the continuous product development, specifications may change without prior notice.*

enfa Incorporation
"We value your demands"

Mumbai Office: F-59, 1st Floor,
 Eternity Mall, Teen Hath Naka, L.B.S. Marg.
 Thane (W) 400602 (MS). | Tel.: +91-22-25835968

Redg. Office: 14/1, Madni Colony,
 Behind Takalkar Society, Central Naka Road,
 Aurangabad. (MS). India. | Tel.: +91-2402300215