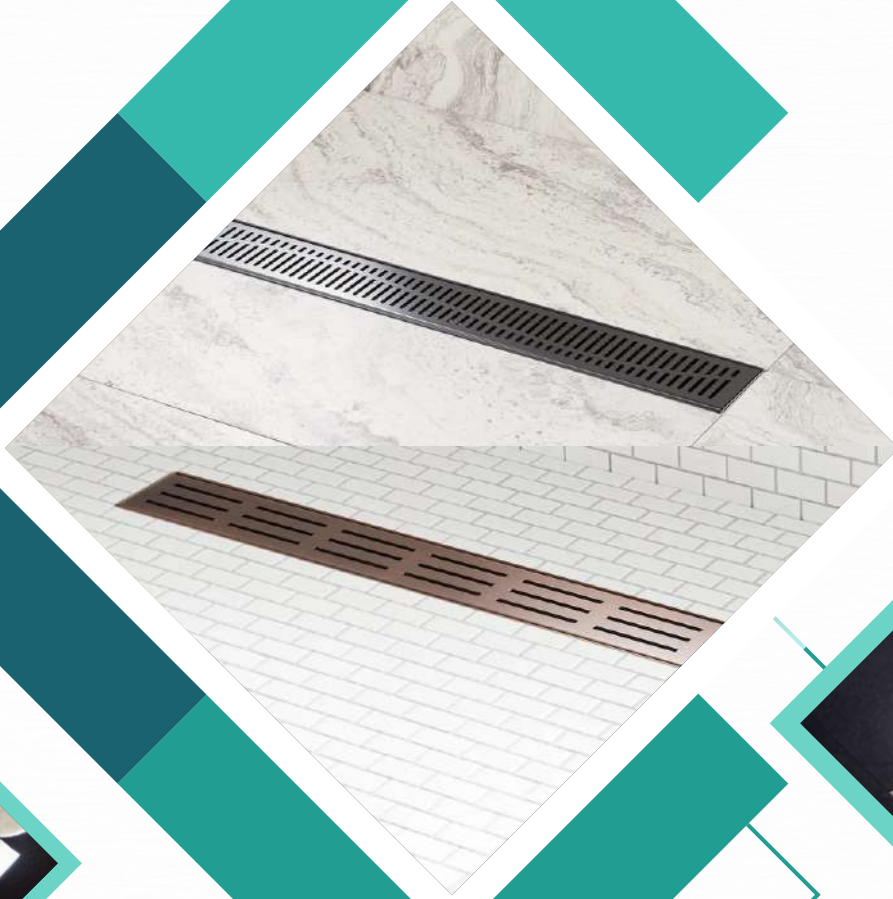


**AN ILLUSTRATED
CATALOGUE OF
SURFACE DRAINAGE
PRODUCTS**





Sectors - Key Areas For DrainCo Products	01
Floor Drain & Clean Out	02
Tile Insert Floor Drain	03
Linear Shower Drain	04
Linear Tile Insert Shower Drain	05
Stainless Steel - Kitchen & Industrial	06
Channel & Gratings	
Wall Parapet Scupper Drains	07
Stainless & Galvanised Steel -	08
Slot Channel	
Recessed Manhole Cover	09
Cast / Ductile Iron & Other	10
Products Gallery	



Drainco™ is a Surface Drainage Brand by **ANFA Incorporation**. It is a manufacturer and exporter of Engineering and Non-Engineering products & services globally. We are supplying the products to different regions internationally through Indian Exporters and directly to the Middle East Market & European Market.

We Possess 25 years of Engineering experience and expertise in Manufacturing of Sheet Metal pressing parts, Stainless Steel Surface Drainage Products under brand name of Drainco, E.O.T. Crane Components, Steel Door Frames, Cast Iron & Ductile Iron Manhole & Gratings.

Our Manufacturing units are based in Mumbai, Pune & Ahmedabad cities in India, are well equipped with latest technology in industries ie; foundry, Press Shop, Tool Room with CNC Machines & Fabrication unit.

Our team of quality controller and technical expert play an indispensable role and leave no stone unturned to leave foot prints in the industry through our quality products. Quality throughout the organisation is mandatory. Our team of quality controllers maintain a rigorous monitoring right from the procurement of raw material to the dispatch of goods.

Our marketing professionals are well diversified having international business experience specifically of Middle East and Africa and European countries.

Our Mission is to earn a reputation of excellence globally by manufacturing & supplying products of superior value and of high quality, providing personalized customer service on the delivery.

A Glance at Our Products in marketing:

Drainco™ is a surface drainage product brand of Anfa Incorporation. also we manufacture Pipe Support System Suspended False Ceiling Accessories.

Industrial Application:

All types of Industrial Over Head Crane, Festoon System for E.O.T. Crane, Crane Components.

SECTORS - KEY AREAS FOR **DrainCo**™ PRODUCTS

In many key areas of our lives, DrainCo provides sustainable solutions for the people and the environment. Our comprehensive range includes systems and service for any project type, application, load class or hydraulic capacity.



**Commercial
Kitchens**



**Food & Beverages
Industry**



Hotels & Resorts



Shopping Centers



**Mixed Use
Developments**



Public Buildings



**Airports, Harbors
& Sea Ports**



**Highways, Roads,
Tunnels & Bridges**



**Petrol Station &
Automotive Workshops**



**Entertainment &
Water Parks**



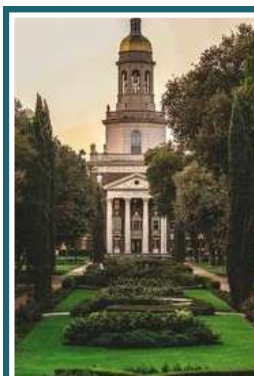
**Medical &
Health Centers**



**Sport Facilities &
Stadium**



Private Residences



**Schools &
Universities**



Other Industries

FLOOR DRAIN & CLEAN OUT

All floor drains and rodding eyes are made from stainless steel V2A (AISI 304) or V4A (AISI 316). The Floor drain type depends on the load, amount of drained water and structural parameters (i.e. the floor thickness). The floor drains are made of 1.5-2 [mm] steel sheets.

All components are welded in argon shield to ensure high quality of joints.



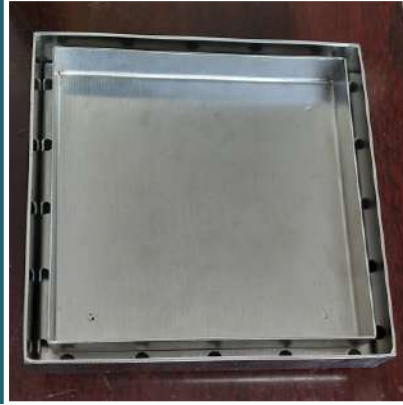
Clean Out



Sr. No.	Products Code	Size (mm) (Length * Width)	Material (Option)	Thickness (Range)
1	DCO-FD 001	150*150	SS 304/ SS 316/	1mm
2	DCO-FD 002	125*125	SS 316L/ SS 202/	to
3	DCO-FD 003	100*100	SS 430	2.5mm

Customization in design and sizes available.
middle / side outlet available

TILE INSERT FLOOR DRAIN



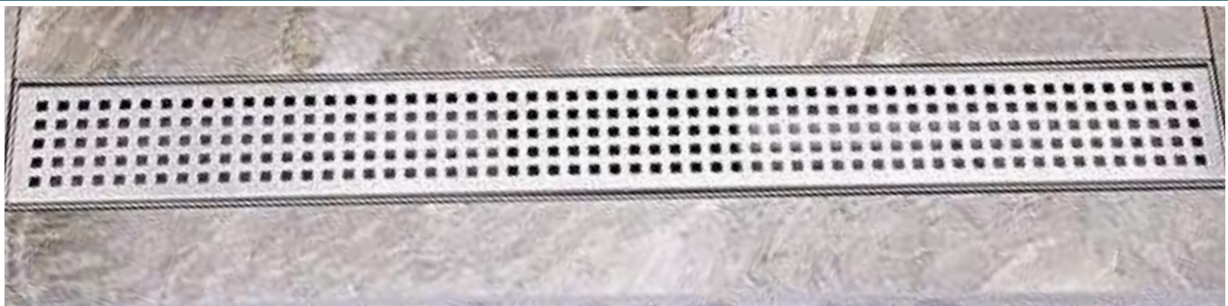
Reversible Pattern



Sr. No.	Products Code	Size (mm) (Length * Width)	Material (Option)	Thickness (Range)
1	DCO-TI 01	150*150	SS 304/ SS 316/	1 mm
2	DCO-TI 02	125*125	SS 316L/ SS 202/	to
3	DCO-TI 03	100*100	SS 430	2.5mm

Customization in design and sizes available.
middle / side outlet available

LINEAR SHOWER DRAIN



Sr. No.	Products Code	Size (mm) (Length * Width)	Material (Option)	Thickness (Range)
1	DCO-SD 01	300*70/80/100	SS 304/ SS 316/ SS 316L/ SS 202/ SS 430	1mm to 2.5mm
2	DCO-SD 02	450*70/80/100		
3	DCO-SD 03	600*70/80/100		
4	DCO-SD 04	750*70/80/100		
5	DCO-SD 05	900*70/80/100		
6	DCO-SD 06	1000*70/80/100		
7	DCO-SD 07	1200*70/80/100		

Customization in design and sizes available.
middle / side outlet available

LINEAR TILE INSERT SHOWER DRAIN



Sr. No.	Products Code	Size (mm) (Length * Width)	Material (Option)	Thickness (Range)
1	DCO-SDTI 01	300*70/80/100	SS 304/ SS 316/ SS 316L/ SS 202/ SS 430	1mm to 2.5mm
2	DCO-SDTI 02	450*70/80/100		
3	DCO-SDTI 03	600*70/80/100		
4	DCO-SDTI 04	750*70/80/100		
5	DCO-SDTI 05	900*70/80/100		
6	DCO-SDTI 06	1000*70/80/100		
7	DCO-SDTI 07	1200*70/80/100		

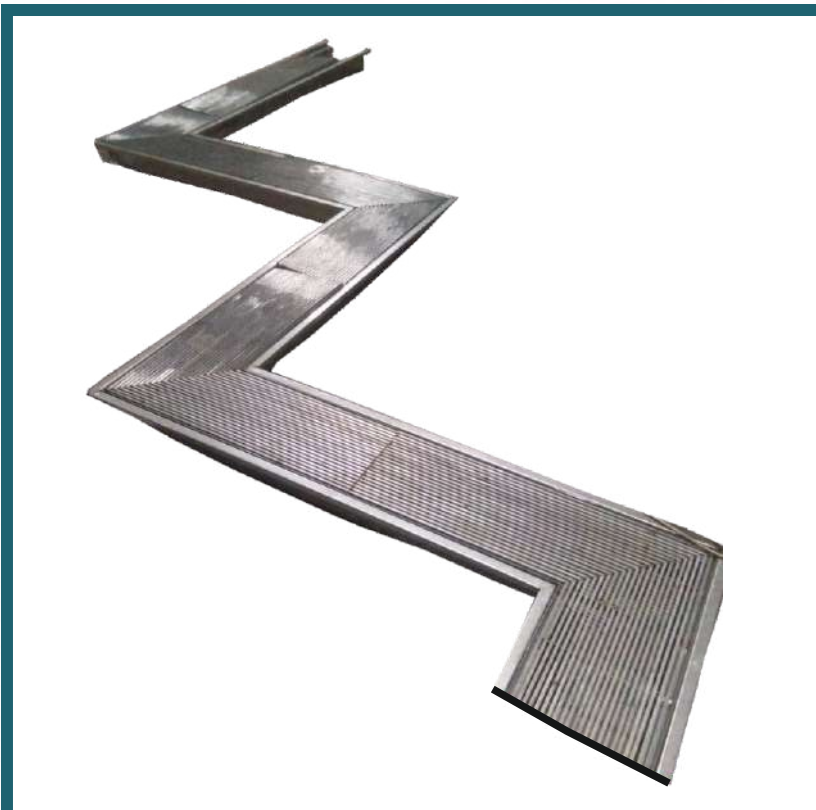
Customization in design and sizes available.
middle / side outlet available

STAINLESS STEEL - KITCHEN & INDUSTRIAL CHANNEL & GRATINGS

KITCHEN CHANNEL is made of stainless steel and is hygienic adapted. It has a larger capacity to be able to take care of larger discharges from i.e. cooking utensils. Delivered with stainless steel mesh grating L15, optionally with stainless steel mesh grating M125. Delivered with side outlet 75/110mm. or bottom outlet 75/110mm.

Kitchen channels are adapted for all types of flooring: Concrete/Resin/Tiles/Vinyl. Available in standard dimensions: 400x400, 600x400, 800x500, 900x600 mm. Placing of the gully part is the centre. Other dimensions are available upon request. The Kitchen channel is made of stainless steel EN 1.4301 (304).

Can also be delivered in acid-resistant En 1.4404(316L).



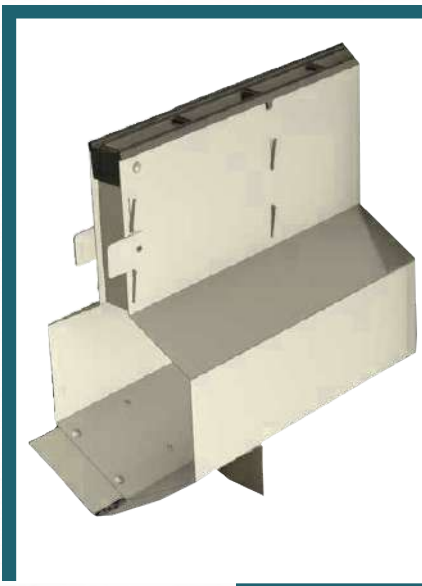
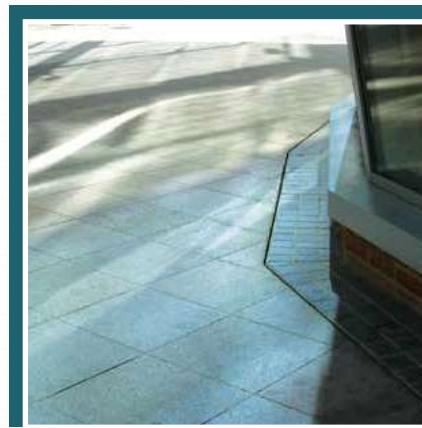
** Can be manufactured in all customized sizes and load class.

STAINLESS & GALVANISED STEEL - SLOT CHANNEL

A cheap and simple method for draining the surfaces where high flow capacity is not required. A perfect solution for rooms with condensate dripping from machinery or A/C systems: bakeries, dairies and swimming pools, as a separation of wet and dry areas.

Manufacturing Technology

The slot drainage channels are made of 1.5-2 [mm] sheets. They feature inclination and can be adapted to the floor thickness. Water drainage from the slot channel can be via a stub pipe or the trapped floor drain with a waste basket. Standard length of a channel with a single outlet should not exceed 10 [m]. The channel sections exceeding 4 [m] in length are joined by means of flanges with gaskets.



** Can be manufactured in all customized sizes and load class.

WALL PARAPET SCUPPER DRAINS

Scupper are used to provide an outlet through parapet walls or gravel stops on flat and built-up roofs to allow drainage of access water. It can be available in different outlet sizes.



ROOF DRAINS

Unwanted water can cause quite a number of problems on any roof. Flat roofs are especially prone to these issues due to their low-angled slopes. Roof drainage helps channel rainwater safely away from the most vulnerable parts of your roof.

From large area roof drains and siphonic roof drainage systems, balcony drains, and roof drain accessories, we cover the range of roof drainage needs for addressing varying rainfall rates and types of sites.



Scupper Roof Drain



Flat Roof Drain



Dome Roof Drain

RECESSED MANHOLE COVER

DrainCo Access covers are designed for horizontal installation, the tray is up. Covers are made from stainless steel, galvanised steel or aluminium in different load classes according to EN 124. They are divided according to the filling material into covers filled with concrete, covers made for filling by the paving and the covers with checkered steel plate on the top. The covers should not be used while the temperature is above 70°C.

- Stainless steel is suitable for application in meat, beverage, chemical or food industry
- Covers made of galvanised steel are typical for residential buildings, as well as for production and storage buildings
- Aluminium covers for demanding applications such as in hotels and hospitals will complete the program

Recessed Manhole Cover Types / Applications

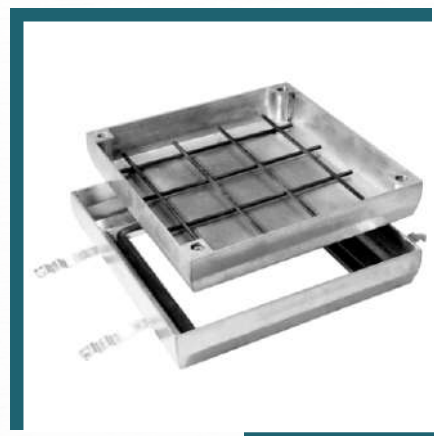
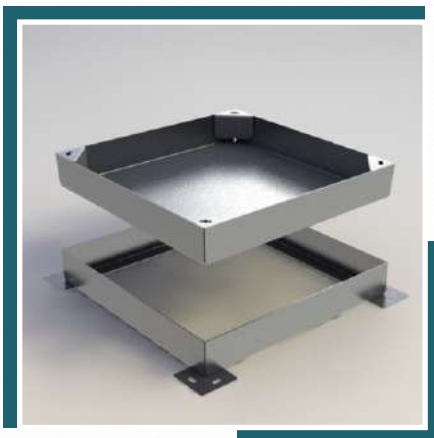
- Cover for Thin Floor Thickness up to 15mm.
- Cover outside buildings, for pedestrian areas, driveways and car parks. Recessed access covers for a pavement, natural stone or bitumen infill in height up to 120 mm.
- Cover with SOLID Top.
- Cover with Hydraulic lifter.

Specification:

Material: Stainless Steel / Galvanised Iron / Aluminium

Size: 400 - 1100 mm (L) x 400 - 1100 mm (W) x 70 - 140 mm (H)

Load Class: A15-C250 as per EN 124



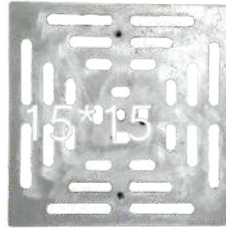
CAST / DUCTILE IRON & OTHER PRODUCTS GALLERY



Ductile Iron Rain
Water Grating



Ductile Iron Grating



Ductile Iron
Gully Grating



Ductile Iron Grating



Hydraulic
Recessed Cover



Rectangular
Manhole Cover



Ductile Iron
Manhole Cover



Recessed Cover



HDPE Channel



Swimming Pool
Grating



Plastic Top
Roof Drain



Aluminum
Roof Drain



Steel Cast Drain



Scupper Drain



Stainless Steel
Trapper



Stainless Steel
Trapper



Stainless Steel
Trapper



Plastic Trapper



Plastic Trapper



Balcony Drain



A Product of **Anfa Incorporation**



Manufacturer & Exporter of
Engineering & Non Engineering Products

Registered & Sales Office

Plot No. 14/1, Madni Colony,
Central Naka Road, Aurangabad. (M.S.) India.
Cell: +91 9320262438 | 8554028622
E-mail: ars@anfa.in | sales@anfa.in

FACTORY

Pune

18/5, F-2 Block,
Near Telco Material Gate,
Pimpri MIDC, Pune - 411018.
Maharashtra India.

Mumbai

Shed No. 05, Khan Compound,
Survey No. 127/1 & 127/2, Tandre Village,
Behind Hindalco Colony, Taloja MIDC,
Dist Raigad - 410208, Maharashtra.

SALES OFFICES

