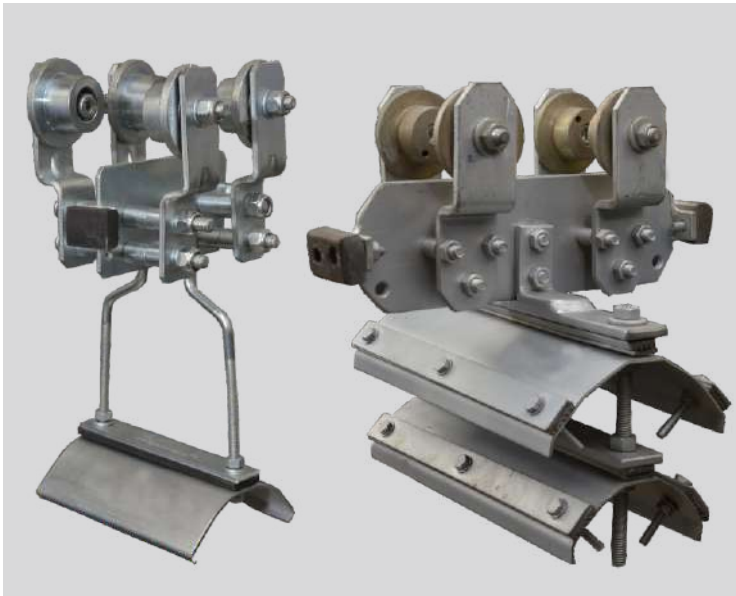
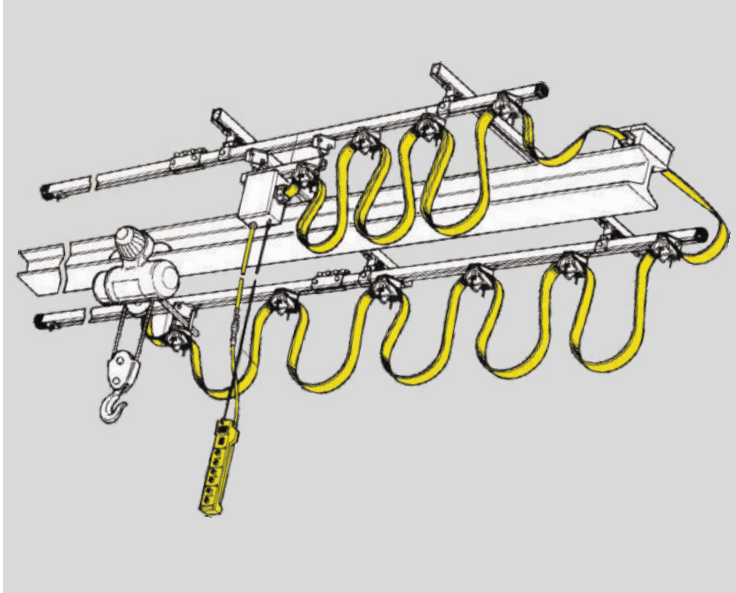




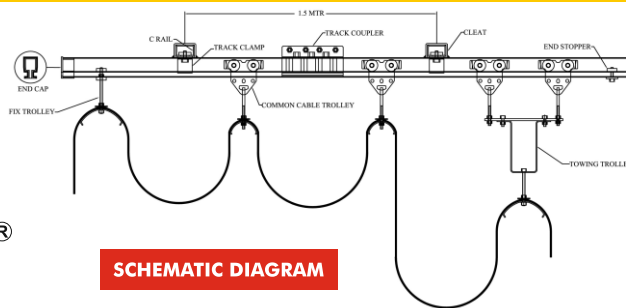
Startech Metal Engineering Pvt. Ltd

**Manufacturer of Crane Components,
Sheet Metal Parts, Tools & Dies and Fabrication**

An ISO 9001 : 2015 Certified Co.

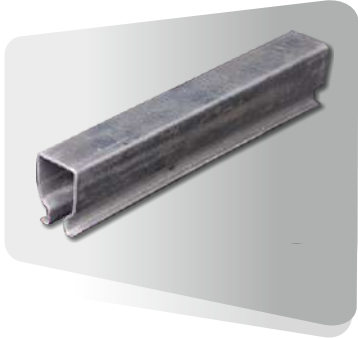


Catalogue of C-Track Festoon System I-Beam & T-channel Cable Trolleys.



SCHEMATIC DIAGRAM

Track Length 3 MTR Part Code ST-001-CC

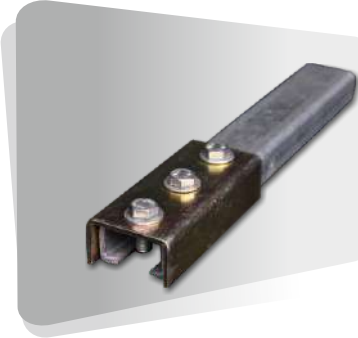


Application:

It is the main rail for cable trolley and pendent trolley. Each track has to be attached with three cantilever fittings through C-Rail & Cleat attachment. Two at the ends and two in between, at 1.5 mtr of distance each.

Material : G. P
Thickness : 1.5mm
Finish : Galvanised

'C'- Rail Support 0.25MTR to 1.1MTR Part Code ST-002-CC

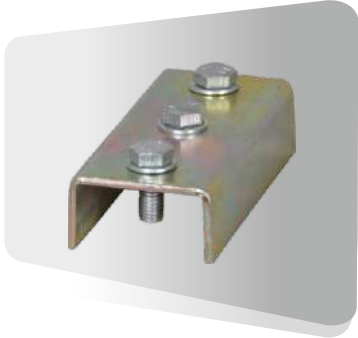


Application:

These are the cantilever fittings to hold tracks. These are bolted with cleat which is welded to the girder.

Material : G.I.
Thickness : 2.5mm
Finish : Galvanised

Cleat Part code : ST-003-CC



Application : Cleat is welded on girders to mount c-rail support.

Material: CrCa
Thickness: 3mm
Finish : Plain (as it is welded)

Heavy Duty Cleat Part code : ST-003-CC-HD

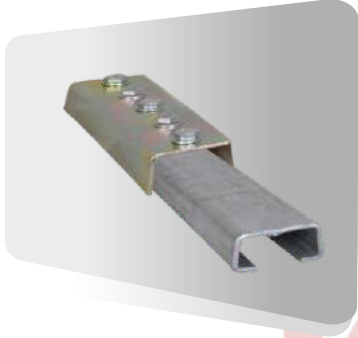


Application : Heavy duty Cleat is welded on girders to mount C-Rail support (length above 1.1mtr 5 bolts for C-Rail support more than 1.1mtr).

Material: CrCa
Thickness: 5mm
Finish : Plain (as it is welded)

Thickness Tolerance $\pm 0.1\text{mm}$

Heavy Duty 'C'- Rail Support Length above 1.1MTR Part Code ST-002-CC-HD



Application:

These are the heavy duty cantilever fittings to hold tracks.

These are bolted with cleat which is welded to the girder.

Material : CrCa
Thickness : 2.5mm
Finish : Galvanised

Girder Clamp (optional to cleat)

Part code ST-019-CC (for I-Beam flange thickness 6 to 20mm)
Part code ST-020-CC (for I-Beam flange thickness 20 to 32mm)



Application : It is optional to cleat. to mount C-Rail support it is required 2 nos.

Material: CrCa
Finish : Plated.



Track Coupler

Part code ST-004-CC

Application:

They are intermediate joints for track to maintain the span length. It joint two tracks firmly and maintains the clear runway for trolley's at the joints.

Material : CrCa
Thickness : 2mm
Finish : Galvanised



Track Clamp

Part Code : ST -005 -CC

Application: Clamps are track holding brackets which are fitted with C-Rail.

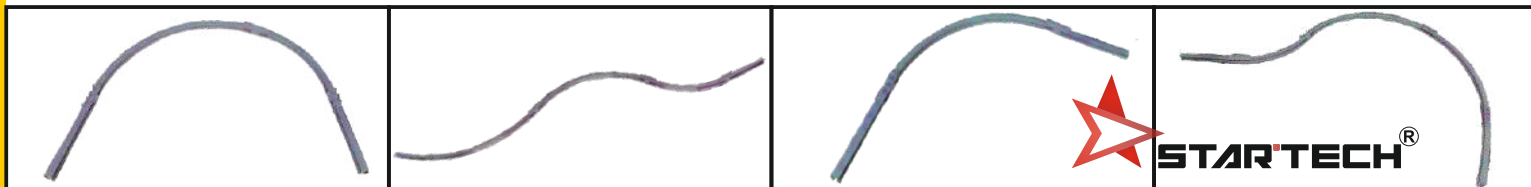
Material : CrCa
Thickness : 2mm & 3mm
Finish : Galvanised



Track Clamp for Hanging Support Part Code : ST -005A -CC

Application: Track Clamps with dual threaded nut to hold track from roof by threaded rod / vertical support.

CURVED TRACK



Uses: Monorail System & various curvature profiled applications.

Dimensions: Minimum 600mm to 2.5metres (it can also be customised as per the requirements)

Common Cable Trolley

Part Code ST-006-CC



Application: For clamping hoist cables & push button cable with desire loop for cross travelling (C.T). Standard recommended distance between each trolley should be 1.5 mtrs each. Cable holders are available with 25mm radius with 50mm clamp width & 45mm radius with 100mm clamp cable width.

Material: CrCa

Thickness : 2mm & 3mm

Bearings : anti-friction self lubricated, brass riveted, Z-section bearings.

Finish: Galvanised

It can be customize with Nylon roller for fire/flame proof application

Thickness Tolerance $\pm 0.1\text{mm}$

Towing Cable Trolley

Part Code ST-007-CC



Application:

This is a first trolley followed by carrying hoists cables. Towing arm is mounted to the hoist for towing this trolley.

Material : CrCa with anti-friction bearings

Finish : Galvanised

Pendent Trolley

Part Code ST -008 -CC



Application:

This is a first trolley followed by common cable trolley's, carrying push button cables. It is used for mounting & movement of pendent control switch (push button). It can be moved freely by manual movement.

Material : CrCa with anti-friction bearings

Finish : Galvanised

Towing Arm

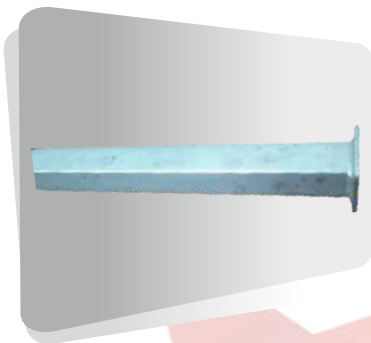
Part Code ST-009-CC

Application:

Arm's one end is mounted on hoist, and other end is fitted with main cable trolley, It helps in towing the trolley's.

Material: CrCa

Finish : Galvanised



End Stopper

Part Code ST -011 -CC

Application:

It is used to stop movement of trolley's.

Material : CrCa

Finish : Galvanised



End Cap

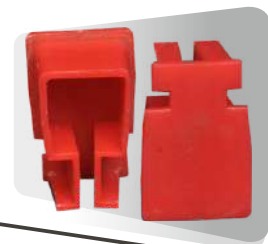
Part code ST -012 -CC

Application:

To cover the end mouths of the tracks.

Material : Plastic

Finish: Red colour



Plastic Wire Clip

Part code ST -023 -CC

Application:

Plastic wire clip is used to fixed power cable for LT motor, varying sizes from 8 to 16mm dia.



Fix Trolley

Part code ST -010 -CC

Application:

It is used to clamp & lock cable movement to avoid strain, twist and pullover cables.

Material : CrCa

Finish : Galvanised



Customize Trolleys

All the festoon cable trolleys can be customize for various applications.
(Fire/Flame proof with nylon roller)

Nylon Roller With Cable Trolley

Part Code : ST -006 -CC-NYLON

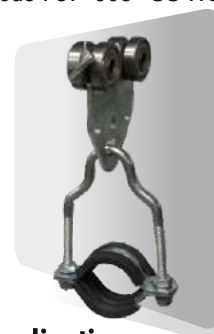
For hose/pipe carrying trolley

Part Code : ST -006 -CC-HOSE



Application:

For flame / fire proof application.



Application:

For hose/pipe carrying application.

Catalogue of I-Beam & T-Channel Cable Trolleys



I-Beam & T-Channel Trolleys Are

- Specially Design For Straight And Curved Path System.
- Best Suites For Round And Flat Cables Applications.
- Manufactured To Suit Various I-Beam Sizes And With Various Load Carrying Capacity Up To 400kg.
- Convenient Design For Easy And Quick Adjustment.
- Ecstatically Designed.

COMMON TECHNICAL DATA :

Load Carrying Capacity:- 20KG to 400KG.

Standard Holder Size:- 55mm to 310mm and can be customized and designed as per requirement

Roller Material:- (Harden Grade) IS-2073 Galvanised Platted.

Bearing:- ZZ-Section Ball Bearing, Self Lubricated, Brass Riveted, Brand Nachi (Japan).

Trolley Body & Cable Holder:- IS-513 Galvanised (Blue Passivation)

Hardware:- Galvanise Steel Standard Grade.

I-Beam Cable Trolleys

I-BEAM COMMON CABLE TROLLEY:- (HEAVY DUTY)

PART CODE : ST-IBT-001-CT.(DOUBLE TIRE)

Load Carrying Capacity:- <200kg.



Application: Startech heavy duty I-Beam trolley can handle most rugged industrial application such a part container cranes, steel mill cranes, monorails, bulk material handling conveyor system.

Standard holder size:- 210mm, 310mm & 400mm or can be designed as per the number of cables & sizes.

Technical Data:-

Roller Material:- (Harden Grade) Is-2073 Galvanised

Bearing:- Zz-section, Self Lubricated, Brass Riveted, Japan Brand Nachi Ball Bearing.

Trolley Body & Cable Holder:- IS-513 Galvanised (Blue Passivation)

Hardware:- Galvanise Steel Standard Grade.

SUITABLE FOR I-BEAMS :-

TYPE	I-BEAM SIZE
ST-IBT-001-CT-A-02-ST/DT	ISMB 100X50
ST-IBT-001-CT-A-03-ST/DT	ISMB 100X50
ST-IBT-001-CT-C-02-ST/DT	ISMB 125X70
ST-IBT-001-CT-C-03-ST/DT	ISMB 125X70
ST-IBT-001-CT-D-01-ST/DT	ISMB 125X75
ST-IBT-001-CT-D-02-ST/DT	ISMB 125X75
ST-IBT-001-CT-D-03-ST/DT	ISMB 125X75
ST-IBT-001-CT-E-01-ST/DT	ISMB 150X75
ST-IBT-001-CT-E-02-ST/DT	ISMB 150X75
ST-IBT-001-CT-E-03-ST/DT	ISMB 150X75
ST-IBT-001-CT-G-01-ST/DT	ISMB 200X100

LOAD CARRYING CAPACITY:- 100kg.

Standard cable clamp holder width 96 to 171mm.

I-Beam Common Trolley

Part Code : ST-IBT-002-CT



Application: Startech Heavy Duty I-Beam Trolley Can Handle Most Rugged Industrial Application Such EOT Cranes, Port Container Cranes, Steel Mill Cranes, Monorails, Bulk Material Handling Conveyor System.

SUITABLE FOR I-BEAMS :-

TYPE	I-BEAM SIZE
ST-IBT-002-CT/A	ISMB 100X50
ST-IBT-002-CT/C	ISMB 125X70
ST-IBT-002-CT/E	ISMB 150X75
ST-IBT-002-CT/F	ISMB 150X80
ST-IBT-002-CT/G	ISMB 200X100
ST-IBT-002-CT/J	ISMB 300X150

I-Beam Common Trolley

Part Code : ST-IBT-003-CT



Application: This range of trolleys offers a simple and cost effective solution for Smooth movement and control cables.

Standard cable clamp holder width 100mm.

SUITABLE FOR I-BEAMS :-

TYPE	I-BEAM SIZE
ST-IBT-003-CT/A	ISLB 100X50
ST-IBT-003-CT/B	ISMB 100X75
ST-IBT-003-CT/C	ISMB 125X70
ST-IBT-003-CT/D	ISMB 125X75
ST-IBT-003-CT/E	ISMB 150X75
ST-IBT-003-CT/F	ISMB 150X80
ST-IBT-003-CT/G	ISMB 200X100
ST-IBT-003-CT/H	ISMB 250X125
ST-IBT-003-CT/I	ISMB 300X140
ST-IBT-003-CT/J	ISLB 300X150

LOAD CARRYING CAPACITY:- 50kg.

I-Beam Common Trolley

Part Code : ST-IBT-004-CT



Application: Well suited for large indoor or outdoor applications and are suitable for both round and flat cable.

SUITABLE FOR I-BEAMS :-

TYPE	I-BEAM SIZE
ST-IBT-004-CT/A	ISLB 100X50
ST-IBT-004-CT/B	ISMB 100X75
ST-IBT-004-CT/C	ISMB 125X70
ST-IBT-004-CT/D	ISMB 125X75

LOAD CARRYING CAPACITY:- 35kg.

Standard cable clamp holder width 50mm.

T-Channel Cable Trolley

T-CHANNEL Common Trolley

Part Code : ST-TST-001-CT



Standard cable clamp holder width 96mm.

Application :

This Is The Heavy Duty Trolley Suitable For Various Sizes Of T-Channel. Are Suited For Both Round And Flat Cable..

SUITABLE FOR I-BEAMS :-

TYPE	T-SECTION SIZE
ST-TST-001-CT/A	ISDT-100X50 & ISNT-50X50
ST-TST-001-CT/B	ISDT-150X75 & ISNT-75X75

LOAD CARRYING CAPACITY:- 100kg.

T-Channel Cable Trolley For all T-CHANNEL sizes

T-CHANNEL Common Trolley

Part Code : ST-TST-002-CT

SUITABLE FOR I-BEAMS :-

TYPE	T-SECTION SIZE
ST-TST-002-CT/A	ISDT-100X50 & ISNT-50X50
ST-TST-002-CT/B	ISDT-150X75 & ISNT-75X75

LOAD CARRYING CAPACITY:- 35KG.

Standard cable clamp
holder width 50mm.

Application :

T-channel Trolley Well Suited For Large Indoor & Outdoor Applications. Are Available For Both Round And Flat Cable.



T-CHANNEL Common Trolley

Part Code : ST-TST-003-CT

SUITABLE FOR ALL T-CHANNEL SIZES:-

TYPE	T-SECTION SIZE
ST-TST-003-CT/A	ISDT-100X50 & ISNT-50X50
ST-TST-003-CT/B	ISDT-150X75 & ISNT-75X75

LOAD CARRYING CAPACITY:- 20KG.

Standard cable clamp
holder width 50mm.

Application :

This Is The Heavy Duty Trolley Suitable For Various Sizes Of T-Channel. Are Suited For Both Round And Flat Cable..



Customize Cable Trolley All the cable trolleys can be customize to numerous applications for various sizes.

MODEL : 70MM - 110MM

SUITABLE FOR VARIABLE I-BEAMS:-
ISMB 70mm TO ISMB 110mm



I-Beam Adjustable Cable Trolley:-
Part Code : ST-IBT-CT-ADJ

Application:

This Adjustable Trolley Designed To Adjust Various Size Of I-Beam From 70mm To 110mm.

LOAD CARRYING CAPACITY:- 40KG

MODEL : 100MM - 300MM

SUITABLE FOR VARIABLE I-BEAMS:-
100mm to 300mm



I-Beam Adjustable Cable Trolley:-
Part Code : ST-IBT-CT-ADJ

Application:

This Adjustable Trolley Designed To Adjust Various Size Of I-Beam From 100mm To 300mm.

LOAD CARRYING CAPACITY:- 100KG.



Nylon Wheel Trolleys
(flame proof trolleys)
Part Code : ST-IBT-NYLON

Application:

In Chemical Industries, Corrosive Environment The wheels of Cable Trolleys Can Be Customize To Nylon Material.



Hose Carrying Trolleys
Part Code : ST-IBT-HOSE-SINGLE

Application:

To Carry The Hose Or Pipe This Type Of Customize Trolleys Are Used.

Towing/First Trolley

Fixed/Last Trolley



Application:

In all above part code models, towing/first trolley & fixed/last trolley are used to complete the system.



Hose Carrying Trolleys
Part Code : ST-IBT-HOSE-DOUBLE

Application:

To Carry two or more Hose/Pipe This Type Of Customize Trolleys Are Used.





Startech Metal Engg Pvt.Ltd is the combination of highly experienced and qualified professionals and technocrats supported by experienced supervisors and skilled workmen, form a strong team which ensures consistent quality and an economical product, delivered in the minimum possible time. With our consistently improving processes and technically well informed team, we have been pioneers in many innovative solutions in Sheet Metal Press Components, Tool Die Designing & High tolerance engineering products.

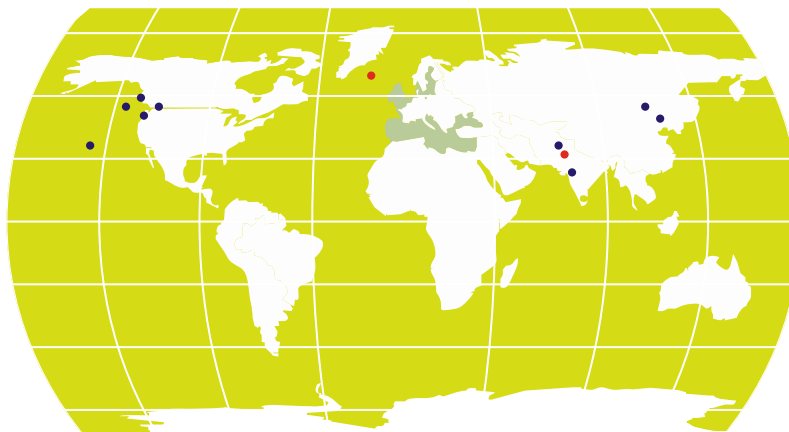
Quality: Our team of quality controllers & technical experts play an indispensable role & leave foot prints in the industry through quality products. Quality throughout the organisation is mandatory & we maintain rigorous monitoring right from the procurement of raw material to the finished product.

Use Startech Festoon System..

- Innovatively designed, closed Track Festoon System.
- Self cleaning Track Profile > No dust accumulation > Frictionless Spark free motion.
- Easy to install & perfect alignment.
- Heavy duty Brass Riveted, Self - Lubricated, Z Section bearings.
- Smart trolley design with flexible stud movement.
- Quality products with longer life durability.
- On time delivery.
- Offer's curvature tracks also....and many more.



Our Global Presence



• Customer • Manufacturing Location

Standard
Transparent
Accurate
Reasonable
Technology
Ethical
Challenge
Honesty

STARTECH METAL ENGINEERING PVT. LTD.

Regd. Office & Factory :

Shed No.05, Khan Compound, Survey No. 127/1 & 127/2,
Tondre Village, Behind Hindalco Colony, MIDC Taloja,
Dist. Raigad - 410208, Maharashtra
Mob: +91 9320262438 / 8554028622
sales@startechmetal.com | www.startechmetal.com